

WINTER 2019

STOWE, VERMONT AND VICINITY Real Estate

Cover Photo By Teresa Merlman

Compliments of
LAMOILLE AREA BOARD OF REALTORS

www.lamoillerealtors.com





The Road To Home Financing



Mark Stanton, CMP

NMLS#85225

802-253-2055

800-877-8390

www.academymortgage.com/markstanton
mark.stanton@academymortgage.com

NMLS#85225, Lisc. # VT85225
Corp. NMLS #3113, Corp. Lisc. #6289 & #1068MB

91 MAIN STREET, STOWE, VT 05672

*Mark has
been helping
homeowners
with their
financing since
1985.*





Love
Where
You
Live

Geoffrey K. Wolcott
Luxury + Distinctive Property Specialist
Uniquely Advantageous Expertise
geoffrey.wolcott@fourseasonssir.com
8 0 2 . 2 3 3 . 9 4 6 5



Four
Seasons

Sotheby's
INTERNATIONAL REALTY

We'll Get You Home

Our team of residential lending experts are fellow Vermonters that you can trust to help guide you through the mortgage loan process. Community National Bank, Vermont's Community Bank. We'll get you Home.



Community
National Bank

Equal Housing Lender  Member FDIC

Vermont's Community Bank™



Prequalify or apply online at vermontcommunitybank.com



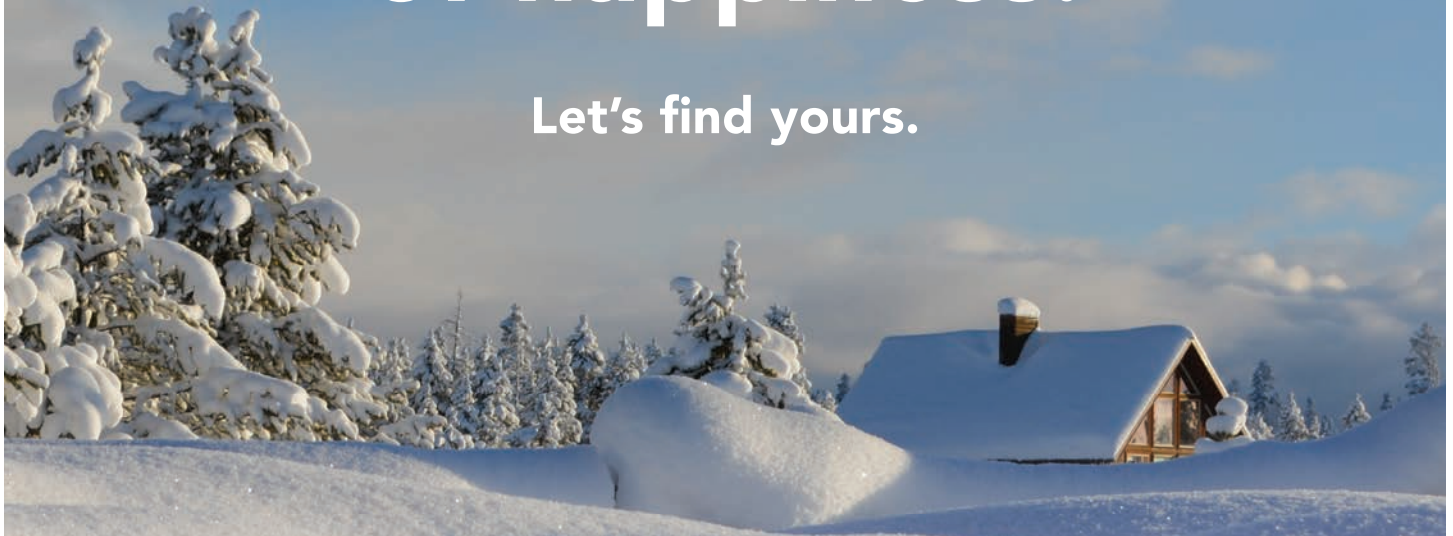
Area Realty, llc



My place to be alone, to be with my friends,
to relax, to feel the cold wind in my face...

Home at the peak of happiness.

Let's find yours.



With innovative technology, networking, dedication
and integrity, partnering with Stowe Area Realty to manage your
real estate interests will give you a distinctive advantage.



Our Team !! **Ken Libby, Tom Mannion,
Mary Russell, Graham Mink and Ron Phipps**

COMMERCIAL AND INVESTMENT PROPERTIES



ROYCE Building | Johnson

The gathering spot in Johnson for 60+ years!
First floor: restaurant with 75 permitted seats, expanded kitchen and restrooms.
Second floor: 3-bedroom apartment.
MLS 4674640 | Call for Price



Lower Main Street | Johnson

Building has 3 tenants: The Dream Cafe, a massage service and a graphic designer. 2nd floor has unoccupied offices. Hardwood floors and shared full bath. Broker seller.
MLS 4680457 | \$199,000



Jersey Heights | Morrisville

Commercially zoned house in a high-visibility location gives a buyer tons of options: single-/multi-family or commercial development. Beautiful village lot close to local amenities.
MLS 4700634 | \$199,000



Bliss Odd Fellows Lodge | Hyde Park

Street level consists of 2 apartments. Second floor is the meeting hall (40 ft. x 36 ft.) with beautiful hardwood floors and high ceilings and a kitchen. Plenty of off-street parking.
MLS 4632527 | \$150,000



Route 100 Bypass | Morristown

2.2-acre lot with high visibility from Route 100 (across the street from Rock Art Brewery). Municipal water/sewer. Flexible commercial zoning; many development possibilities.
MLS 4680677 | \$249,000

LAND

Summit View Drive | Stowe

LAST LOT in desirable "The Birches" development. Permitted for a 4-bedroom home. Average price of homes already built is about \$900,000. Town water/sewer and electric. HOA has recently been formed.
MLS 4709114 | \$197,500

Deerfield Hills Road | Morristown

67+ acre lot that can be maintained as a great hunting and hiking area or can be subdivided into housing opportunities.
MLS 4720523 | \$145,000

RESIDENTIAL



Stoweflake Mountain Resort | Stowe

Fully furnished with 3 bedrooms, 3 baths and 2 gas fireplaces. Lock-off master suite and quality management for flexible rentals. Owner(s) can access all resort amenities.
MLS 4637040 | \$395,000



Brick Cape | Morristown

This charming, solid home is a 15-minute walk to the Village. Four bedrooms, 2 baths, spacious kitchen, walk-in closet for storage plus a full, dry basement.
MLS 4680740 | \$179,000



Spruce Lane | Hyde Park

1,404 sq. ft. ranch (to be built/likeness only) in a private neighborhood. Open floor plan with a master bedroom suite, large, level lot and mountain views. Agent seller.
MLS 4725054 | \$250,000



Mountain Associates

REALTORS

1120 EDSON HILL, STOWE

LOCATION, LOCATION! Miami meets Vail in this Contemporary Mountain Cabin with clean lines and every attention to detail. Pro-style kitchen, 1st floor master suite with jacuzzi and sauna, and a grand fireplace in the family room. 3 bedrooms, office and shared bath complete the upstairs. The open floor plan is great for easy entertaining and the plentiful over-sized windows draws the beautiful landscape of wilderness and mountain stream inside creating a relaxing spa like atmosphere. Attached Garage. Close to the Mountain Road and all of Stowe's Amenities.

MLS #4687966

\$1,095,000



Thank you for a VERY successful 2018! Thinking of Listing?!

Let Our Team of Experienced Locals and Unique Marketing work for You!



MLS# 4695578

Amazing Stowe Value. Cape on private lot South of the Village. 2BR up, one on main level plus gas fireplace complete this well-built modular. Beautiful Landscaping. Convenient location. **\$325,000**



STUART BARAW
802-229-8438



MARION BARAW
802-253-8518



MLS# 4707136

16.85 acres & home w/ 4,000+sq.ft. Upper open level w/3BR, cath. ceiling, fireplace & sun porch. Out building w/bath. Meadows & woods for your adventures. Clear for BIG views. **\$595,000**



BOBBY ROBERTS
802-371-7007



MLS# 4245989

Experience all the comforts and pleasures of a 4 diamond resort. 3 bedroom units include a 2 room lock-off master suite, large expansive decks and magnificent views. Management & rentals are handled by the StoweLake Resort making your ownership worry free. **From \$475,000**



LISA BURLINSON
802-249-8967

802-253-8518
Mountain Associates Realtors
Stowe, VT ~ www.mountainassociates.com

This is more than a real estate transaction.



It's where your dreams will unfold.

For most people, buying a home is the biggest financial and personal investment of their lives. That's what inspires William Raveis agents everyday and what drives us to bring unparalleled service to our neighbors in and around the Stowe area. We combine the strength and resources of one of America's leading real estate firms with the local knowledge and community focus of a real family business. So when you're ready for your dreams to take flight, you can count on our family to be there for yours.



\$650,000 MLS #4663245
4000 Mountain Rd., Stowe, VT
John Biondolillo (802) 253-8484



\$1,490,000 MLS #4642968
360 Dean Hill Road, Killington, VT
Daphne Lowe (802) 779-1605



\$490,000 MLS #4718068
90 Clover Lane, Waterbury, VT
Rich Ibey (802) 253-8484



\$645,000 MLS #4704000
118 Bull Moose Ridge Rd., Stowe, VT
Kevin Petrochko (802) 253-8484

25 Main Street, Stowe, VT
(802) 253-8484 • StoweRealty.com

 Independently Owned and Operated 

WILLIAM RAVEIS
LUXURY PROPERTIES



The official Realtor of the Boston Red Sox



Green Is Our Favorite Color, Too.

If you're looking to list or buy an exceptional property in the Green Mountains, with William Raveis you really can get there from here. Our local agents have strong ties to their communities and an unparalleled knowledge of the market. And William Raveis Real Estate has been named [Top Luxury Brokerage in the USA](#) by Leading Real Estate Companies of the World.

WILLIAM RAVEIS
LUXURY PROPERTIES

Stowe Realty
(802) 253-8484

StoweRealty.com

 Independently Owned and Operated 



Official REALTOR® of
the Boston Red Sox



A world-class residence overlooking a swimming pond and dramatic Mt. Mansfield views. Finished with exquisite taste and the finest lighting, appliances, and fixtures. 5 Smartly-designed bedrooms, 7 baths, and 3 fireplaces. When only the best will do!

(802) 253-9771

MLS# 4698715 | \$1,750,000



Spectacular Edson Hill Estate from the private drive to the awesome landscaped grounds with twin ponds. This dramatic contemporary residence offers privacy in one of Stowe's most asked for locations.

(802) 253-9771

MLS# 4659171 | \$1,175,000



Spectacular property in Stowe Village. Completely restored in 2000/2001, the property offers multiple uses including retail, office, or a residence. Plenty of parking. Access from the Mountain Road or Main Street.

(802) 253-9771

MLS# 4714337 | \$1,300,000

The Trusted Name in Real Estate Since 1969



"The Fountain" currently zoned condos. Condo A (main house) w/4000± SF, 5-BR, and a 1-BR apt. Condo B (carriage house) has 2,454± SF and 3-BR. Wood floors, FP/gas stoves in both. Mount Mansfield views. (802) 253-9771 MLS# 4705704 | \$895,000



Renovated turnkey 3-BR, 3-BA ski-in/ski-out townhouse at Stowe Mountain Resort! Upgraded kitchen, wet bar, bathrooms, AC, furnace and fireplace. Offered furnished with exceptions. (802) 253-9771 MLS# 4717904 | \$600,000



Nestled on a ridge between two mountain streams and adjacent to Von Trapp cross country trails, this 10.12± acre parcel awaits your new home. Panoramic views and just a short drive to Stowe Village. (802) 253-9771 MLS# 4697266 | \$485,000



4-BR, 4-BA home in the modern VT farmhouse style, on 5+ private acres with Camel's Hump views. Sunny eat-in kitchen, hardwood floors, spectacular master suite, and an oversized heated 2-car attached garage. (802) 253-1806 MLS# 4723420 | \$689,000



Moulton Lane, Stowe - Exceptional and private with 4-BR and 2-BA. Wonderful yard and deck, new roof, generator, hardwood and tile floors, and finished attached 2-car garage. An ideal choice in Stowe. (802) 253-9771 MLS# 4716119 | \$469,000



Restored 3-BR antique VT farmhouse on 58± AC. 55± AC enrolled in VT's Land Use Program. Panoramic mountain & valley views! Radiant heat, exposed beams, chef's kitchen, barn, garage and more. (802) 253-1806 MLS# 4666717 | \$575,000



Lovely, gently sloping 4± acre lot in the exclusive neighborhood of Robinson Springs. Enjoy panoramic views and a central location between Stowe Mountain Resort and historic Stowe Village.
(802) 253-1806 MLS# 4723189 | \$450,000



Immaculate inside & out! 3-BR, 3-BA, large kitchen with upgraded appliances, spacious 1st floor master suite, and a family room which opens to a private deck. 5.4± Acres only 10 minutes to Stowe Village.
(802) 888-1102 MLS# 4682861 | \$350,000



Premier Stowe commercial building with expansion possibilities, excellent visibility, & mountain views. 14.8± Acres, 22 parking spaces, 3 floors, elevator, town water, & septic system with 780 GPD available capacity.
(802) 253-1806 MLS# 4715525 | \$1,600,000



2,400+ SF commercial/residential building on 1.3± acres. Formerly a vet's office on the main level with a 2-BR apartment on the second level. Could be converted to solely residential use. High visibility.
(802) 253-9771 MLS# 4704236 | \$395,000



11.7± Acre parcel with perhaps THE most magnificent views! Gently sloping lot is permitted for a 5 BR home. Electric, phone and cable to lot line. Close to winter and summer recreation.
(802) 253-9771 MLS# 4316241 | \$249,000



Special conserved farm on 135± acres with large barn and 3 apartment farmhouse - sugar house, meadows and woods, Current Use and VT Land Trust conservation. Two miles to Stowe and convenient I-89.
(802) 253-9771 MLS# 4723768 | \$650,000



Custom designed Post & Beam home on 11.98± acres. 4-BR, 4-BA, great room, oak floors, chef's kitchen. 50' covered porch, deck, hot tub, generator and in-law area. Heated 3-Car garage and studio workshop.
(802) 888-1102 MLS# 4721351 | \$1,100,000



A true family compound in Stowe. Large and spacious floor plan unlike any other offering. A 7,000± sq. ft. residence with pool and separate hobby barn. This property is Stowe's great value.
(802) 253-9771 MLS# 4619701 | \$1,375,000



Nearly 6,000± sq. ft. of luxury with 5 bedrooms and 6 baths, this home is constructed of natural materials and built in two phases: the original stone house and a new contextual addition linked by an entrance foyer. A pool house, tennis court, and Sterling Brook just a short walk from the main house complete this impressive 11± acre property.
(802) 253-9771 MLS# 4693244 | \$1,100,000



Exceptional and immaculate contemporary residence with massive Stowe valley views located in a highly sought after Stowe neighborhood - Robinson Springs. Architect designed, quality materials and construction with highest grade finishes throughout. Mature professional landscaping accented by stone walls and private patio areas.

(802) 253-9771

MLS# 4708368 | \$1,750,000



Beautifully restored and meticulously maintained antique Vermont farm house on the Mountain Road in Stowe. Now a large 5,000 residence with an office. Zoned Commercial.

(802) 253-1806

MLS# 4689724 | \$959,000



A magnificent country estate nestled against state and town forests at the base of the historic Worchester Range. A home with so many rooms and storage areas there is not space available to list them.

(802) 253-9771

MLS# 4695236 | \$1,200,000



This 4,268± SF home, located minutes from Stowe Mountain Resort, includes 5 BR, an updated chef's kitchen, great room, and fireside reading area. Set on nearly 2 AC with lush perennial gardens and pool.
(802) 253-9771 MLS# 4693813 | \$698,000



Fully furnished and equipped 3-BR, 4-BA condo at Stoweflake Resort & Spa offering swimming pools, tennis court, executive par 3 golf course, gym/spa facilities, restaurant, and more.
(802) 253-9771 MLS# 4719785 | \$445,000



Magical Victorian mansion built in 1887 and sited just above Barre's town park and Vermont History Center. 5 bedrooms in main house and 1 bedroom apartment in carriage house.
(802) 253-9771 MLS# 4720114 | \$389,000



Spacious condo in the desirable enclave of Stonybrook. 4,000+ SF with 5 bedrooms, 5 baths, and it is offered furnished. Convenient location, surrounded by 160 acres of woods, ponds, and trails.
(802) 253-9771 MLS# 4719979 | \$499,000



Incredible 30-acre property offers complete privacy and convenience to amenities. Gourmet kitchen, library, fireplace, 3-season sunroom, covered porch, plus separate guest quarters, and an oversized barn/garage.
(802) 888-1102 MLS# 4700603 | \$469,000



This 4.23± AC lot in a private setting with cleared views of Elmore Mountain and the Worcester Range is permitted for up to 6 BR. Septic system designed and underground utilities to the lot.
(802) 253-1806 MLS# 4707697 | \$115,000



An amazing 121± AC property with a well maintained 2-BR, 2-BA 1800's school house. Abundant natural light & character, plus an attached 2-car garage & oversized garage/workshop.
(802) 888-1102 MLS# 4719771 | \$629,000



This well maintained 3-BR Contemporary offers a well thought out floor plan, tiled foyer, large kitchen, fireplace, full basement, and 2-car garage. Landscaped with perennials and stone walk-way.
(802) 888-1102 MLS# 4721519 | \$325,000



Furnished camp with 60' of frontage on Lake Eden. 4 Spacious bedrooms, large front deck and a back patio - ideal for entertaining. Beautiful views, lawn space for outdoor fun, and dock.
(802) 888-1102 MLS# 4721790 | \$169,000



Ready for building with all the prep work complete! Easy hook-up to electricity, community septic, municipal water, and a roughed in driveway. Ideally located between the ski resort and Stowe Village.
(802) 253-1806 MLS# 4685384 | \$189,500



Welcome investors! This 6-unit apartment building consists of four 1-BR units, one 2-BR unit, and one efficiency unit. Set on a level 0.66± AC lot bordering the Lamoille River.
(802) 253-1806 MLS# 4707689 | \$350,000



Large, private, 15.2± acre lot in the Robinson Springs neighborhood. Enjoy Worcester Mountain views, southern exposure, and direct access to town land for hiking, biking, skiing.
(802) 253-1806 MLS# 4605992 | \$250,000



DIRECTORY



1800 MOUNTAIN ROAD ~ PO BOX 539
STOWE, VERMONT 05672

MAIN: (802) 253-9771
TOLL FREE: (800) 253-2700
FAX: (802) 253-9993

DEBBY BURNOR x114
RICK CARRICK x146
ROY CLARK x147
NANCY DUMONT x116
JUDY FOREGGER x135
JONI GAINES x127
JOHN GRADY x134
MATT HILL x159
DAVID JAMIESON x118
TERESA MERELMAN x141
GEORGE NELSON x137
XANDER PAUMGARTEN x115
RHONDA ROBERTS x154
LESLIE ROLLINS x142
PALL SPERA x111
ROB TATRO x126
BIDI WHEELWRIGHT
SHERRY WILSON x149



65-5 NORTHGATE PLAZA ~ PO BOX 507
MORRISVILLE, VERMONT 05661

MAIN: (802) 888-1102
TOLL FREE: (877) 888-4679
FAX: (802) 888-1106

NANCY DURAND x140
BOB DURAND x117
CASEY GRONDIN x155
MONICA HEATH x157
LAUREL HOULE x158
ANGELA LAMBERT x136
PENNY MASON ANDERSON x145
NANCY PRITCHARD x153

SUPPORT:

PAUL GEARY, IT (802) 253-9771 x123
JASMINE STUTZENSTEIN, Marketing (802) 253-9771 x132
SANDY GODIN, Office Administration (802) 253-9771 x110
ERIKA HEINTZ, Office Administration (802) 253-1806 x113
LINDA JOHNSTON, Office Administration (802) 888-1102 x112
LESLIE ROLLINS, Rental Manager (802) 253-9771 x142



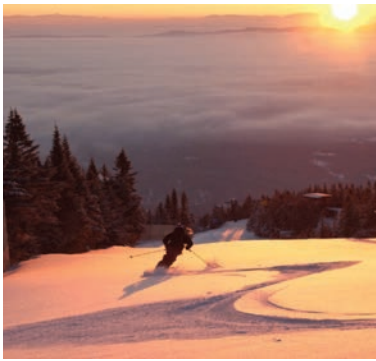
62 MAIN STREET ~ PO BOX 539
STOWE, VERMONT 05672

MAIN: (802) 253-1806
TOLL FREE: (888) 253-2588
FAX: (802) 253-1807

GEORGE BAMBARA x131
SHARON BATEMAN x148
ANDREW GILLESPIE x130
CAROLINE MARHEFKA x144
SUSAN O'ROURKE x119
GRANT WIELER x150



Live in nature at the mountain's door ...



a new and exciting lifestyle experience in Stowe



Contact Pall Spera (561) 762-8188 and Sharon Bateman (802) 371-8777 for Information and Reservations



Judy Foregger

Direct 802.760.3135

Cell 802.272.7773

judy.foregger@pallspera.com

judyforegger.com



Magical Setting in Robinson Springs

A lovely private approach beckons you to this exceptional 23.5± acre Stowe estate with 5 bedrooms and 6 baths. Magnificent mountain views and extensive perennial gardens enhance the magical setting of this private oasis, complete with swimming pool. The 23.5± acres is comprised of two parcels. A rare find in Stowe.

MLS# 4641568 | \$1,792,500



Robinson Springs, Stowe ~ 5± Gently sloping acres in this upscale "ski country" subdivision. Quiet location, potential views, and a lovely meadow in large building zone. XC ski & horse trails bound the East, West & South sides of the property.

MLS# 4723960

\$395,000



This beautiful, rural 109± acre parcel is easily accessible yet close to recreation, shopping, and I-89. Mountain views, fields, woodlands - ideal as a horse farm. Adjacent to extensive state hiking areas. Development potential.

MLS# 4629456

\$375,000



22± Acres with subdivision potential. Beautiful open field with big views of the Worcester Range. Close to I-89, Waterbury Reservoir, and other opportunities for recreation - hiking, skiing, and boating. Perc tests available.

MLS# 4723974

\$250,000



Two parcels of 2± acres in Waterbury Center with southerly and westerly exposure, overlooking open fields and exceptional mountain views. Easily accessible, access to Thatcher Brook. Each permitted for a 5-BR home. Owner/agent.

MLS# 4624242, 4624238 Starting at \$149,000



Beautiful open field with views of the Worcester Range. 5± Gently sloping acres in a desirable and easily accessible Waterbury Center location. Lovely southeasterly exposure. Permitted for a 4-BR home. Ideal for horses!

MLS# 4714301

\$145,000



Easily accessible 3.9± acre parcel adjacent to thousands of acres of state land, hiking at Hunger Mountain, XC skiing, and snowshoeing. Permitted for a 5-BR home with potential Camel's Hump and valley views with some clearing.

MLS# 4720970

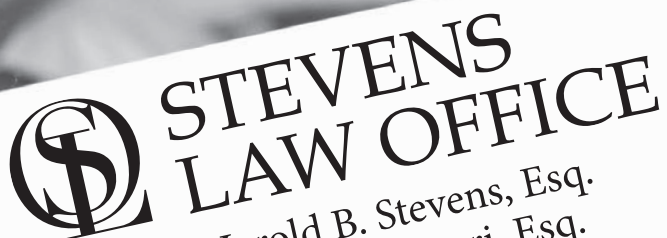
\$120,000

judyforegger.com

802.272.7773 | judy.foregger@pallspera.com

Scan to Search
for more Stowe
Area Properties!





**STEVENS
LAW OFFICE**

Harold B. Stevens, Esq.
John F. Pellizzari, Esq.

Phone: 253-8547
1.866.786.9530
www.stowelawyers.com

- Residential and Commercial Sales and Purchases
- Refinance
- Act 250 Permitting
- Environmental Zoning
- Land Use Law
- Landlord & Tenant
- Homeowner's Associations



**Offices located in
Stowe and Derby**

• *Free Initial Consultation*



search with confidence

You've probably never heard of a mortgage company whose goal is to get your loan underwritten within 6 hours and processed in 7 days*, but that's exactly what Movement Mortgage delivers. We believe that faster processing can and should be done in order to get families in homes quickly and create a positive, referable lending experience for everyone involved. Our 6 Hour Underwriting, 7 Day Processing, and 1 Day Closing* goals are our specialty, and it works in your favor. How do we do it? Contact me today, I would love to show you how.



Tom Stewart
SENIOR LOAN OFFICER

NMLS#: 589247

direct: 802.339.4507

cell: 802.310.7559

fax: 802.448.6748

Tom.Stewart@movement.com
movement.com/Tom.Stewart



MOVEMENTMORTGAGE



*While it is Movement Mortgage's goal to provide underwriting results within six hours of receiving an application, process loans in seven days, and close in one day, extenuating circumstances may cause delays outside of this window. 1889 Williston Road, Suite 100, South Burlington, VT 05403 VT-VT58947 | Movement Mortgage, LLC supports Equal Housing Opportunity. NMLS ID# 39179 (www.nmlsconsumeraccess.org) | 877-314-1499. Movement Mortgage, LLC is licensed by VT # 6862 & 39179-1. Interest rates and products are subject to change without notice and may or may not be available at the time of loan commitment or lock-in. Borrowers must qualify at closing for all benefits. "Movement Mortgage" is a registered trademark of the Movement Mortgage, LLC, a Delaware limited liability company, 8024 Calvin Hall Rd, Fort Mill, SC 29707. CPID 4287 | Exp. 12/2017



Alison Beckwith
Owner / Broker

Meg Pocher
Rental Manager

Full Service Real Estate, Rentals & Property Management

BeckwithRealEstate.com
alison@beckwithrealestate.com
reservations@beckwithrentals.com

802-253-2221

1069 Mountain Road
P.O. Box 1493, Stowe, VT 05672



Estate Properties



New to market! This gentleman's farm is situated on 7 fully-fenced acres on a pastoral hilltop, tucked away behind two historic farms. With a 2007 renovation, an Adirondack-style wing was added featuring a cathedral ceiling post and beam living room opening to a bluestone patio overlooking the one-acre pond, plus a handsome master suite and cheerful children's suite on the lower level. Two additional guest bedrooms and a bath are on the second floor; a caretaker's apartment has a private entrance. Only 2 miles to the Mountain Rd but with a feeling of complete serenity, this home is an ideal family retreat or primary residence for a large family. **\$1,495,000. Exclusive.**



Shangri-La is a refined post-and-beam 5-bedroom home nestled into 11 private acres in Robinson Springs. Enjoy sweeping southerly views over the pristine pond from every room in the house - a screened porch and blue-stone patios provide outdoor venues to enjoy these natural surroundings. The moment you walk through the door, a soaring stone fireplace welcomes you and creates a cozy ambiance for the open floor plan, ideal for entertaining. The main level master suite captures the sound of a small waterfall hidden in the woods. The downstairs is designed for maximum functionality with a bunk room, office, and billiard room. This home offers everything you have ever wanted in a mountain retreat and is offered fully furnished and equipped! **\$1,750,000. Exclusive.**

Stowe's Luxury Rental Agent®

Guest Quarters • Family Homes • Country Homes • Grand Homes • Slopeside at Stowe

802-253-8858

www.beckwithrentals.com

Adding new inventory - call us to join our luxury rental portfolio.



CARLSON REAL ESTATE

CUTTING EDGE TECHNOLOGY

SUPERIOR SERVICE

TANGIBLE RESULTS

91 MAIN STREET

PO BOX 300

STOWE, VT 05672

802-253-7358

866-253-2502

www.StoweVermontRealEstate.com





GLOBAL
LUXURYSM

Nothing Like New...



Stowe Club



Starting at \$898,000

Quality, luxury construction by Riverwatch Construction. Prime location, halfway between Stowe Mountain Resort and Stowe Village. High-end, new construction, move in ready.



Tinker Farm



Starting at \$389,000

Well-planned new development with panoramic views, community pond, open meadow set in a pastoral setting. High quality custom homes by Riverwatch Construction.

**The Smith Macdonald Group
Coldwell Banker Carlson Real Estate**

91 Main Street, Stowe, VT 802-375-5009
stowere.com info@stowere.com



Trapp Family Lodge - GUEST HOUSES

"Timesharing as it should be"



Find out how convenient and flexible ownership can be.
Deeded weekly ownership starts at less than \$3,000.

For more information or to view a Guest House please call Villa and Guest House Ownership 802-253-5738 or email tab@trappfamily.com

THE VILLAS AT TRAPP FAMILY LODGE



Coming in 2019
2 Bedroom Townhomes starting at \$675,000

**Deeded Ownership starting
at less than \$40,000**

Stowe, Vermont 802-253-5738 www.trappfamily.com

The information contained herein is not intended as an offer to sell real estate in New York or in any state where registration and/or public offering statement is required, and this property has not been registered or public offering statement delivered. All information related to The Villas at Trapp Family Lodge development is subject to change without notice.

We invite you to discover the comfort & convenience of a luxurious vacation home on our family's 2,500 acre resort, with customized plans that make ownership affordable and practicable to all.

- Fractional & whole ownership available
- Exchange for other luxurious properties worldwide
- Amenities at Trapp Family Lodge include cross country skiing, mountain biking, fitness center with indoor pool, yoga & massage sanctuary



The Bateman Group at Pall Spera Company Realtors

Vermont Properties, Global Connections

Let Our Expertise Work For You

The Bateman Group

Experience... Each member of The Bateman Group brings a diverse background of knowledge, experience and professionalism to the team. Together, The Bateman Group has a combined 42 years of Real Estate experience with which to represent our clients.

Since 2004 we have made it our number one priority to make sure that your real estate buying and/or selling experience is flawless.
#MakeVermontYours



Mountain Luxury



95 National Dr. Stowe

4,500± Sq. ft. mountain-chic home at Spruce Peak offering 5-BR, 5-BA, ski-in/ski-out access, ski trail views, contemporary lines, energy efficiency and access to incredible amenities. Built by Gristmill Builders, builders of the 2011 HGTV Dream Home.

MLS# 4617190 | \$3,950,000



607 Upper Pinnacle. Stowe

Georgian/French Country Stowe home with 4-BR, 4-BA. Open 1st floor plan, chef's kitchen, black walnut floors, Canadian Spruce windows & doors, private home theater. Complete privacy on 5.14± acres with pool and mountain views.

MLS# 4707041 | \$1,950,000



91 Lang Farm. Stowe

A modern Stowe Hollow home on 4.5± acres with Mt. Mansfield views across the spring-fed pond. The 5-BR, 6,815± sq. ft. home offers a high level of finish, 3 fireplaces, large windows, large deck, in-law suite, and a finished walkout lower level.

MLS# 4708696 | \$1,675,000



201 Lower Judson. Stowe

Enjoy this private 10± acre setting with pond and magnificent views! The 5-BR, 5-BA, 4,586± sq. ft. home features hardwood floors, updated kitchen and baths, custom built-ins, and exceptional attention to detail.

Approx. 5 minutes to the village.

MLS# 4657929 | \$1,350,000

Vermont Country Homes



Quintessential Johnson Homestead

On 15± acres, this 4-BR, 2,794± sq. ft. home offers an authentic slice of Vermont! New standing seam roof, upgraded boiler & water heater, replaced septic system & windows, in-ground swimming pool, barn, building for maple sugaring, 2-car garage.

MLS# 4502940 | \$450,000



The Top of Town Hill Road. Wolcott

Unique contemporary home on 30± acres with panoramic mountain views. Wonderful open concept living area, spacious master BR, wrap around deck, and walkout lower level. Enjoy close proximity to the Green River Reservoir and other recreation destinations!

MLS# 4720550 | \$425,000



Above the Village of Morrisville

This spacious 3-BR, 3-BA home boasts a large mudroom, open kitchen/dining area, custom cabinetry, kitchen island and more! Set on 12± private acres (abutting State land) with great views, swimming pool, landscaped yard plus close proximity to Morrisville amenities.

MLS# 4695876 | \$390,000



Waterfront Home on Lake Elmore

This quiet, year-round lakeside home has 3 bedrooms, 2 baths, upgraded finishes, abundant natural light, plus plenty of space and privacy. The large deck and private dock provide opportunities for recreation and relaxation.

Steady rental history.

MLS# 4513444 | \$375,000



Johnson Vermont Getaway

This light-filled contemporary farmhouse is turn-key, offered fully furnished. The 2,372± sq. ft., 3-BR, 3-BA home has been finished with a commitment to Vermont charm. Set upon 10± private acres with panoramic views, near recreation opportunities.

MLS# 4419120 | \$295,000



Perched Above Mad River Valley

A welcoming 8.2± acres property, complete with established gardens, berry bushes, fruit trees, chicken coop, and more. The 4-BR home offers character, modern amenities, and an open floor plan. 15 Minutes to Waterbury, 20 to Montpelier or Sugarbush.

MLS# 4701707 | \$515,000



'Round the Clock Farm. Groton, VT

Enjoy 110± acres of stunning pastures, meadows, forest, mountain views and 3 ponds in Groton. A 3-story classic red barn compliments the 4-BR farmhouse...a charming site for a hobby farm, B&B, wedding venue, or simply a private escape.

Access to the VAST trails.

MLS# 4665745 | \$380,000

55 Acre Land Offering

This 55± acre lot was once part of neighboring "Round the Clock" farm. Today, clover is harvested twice per season and the sugarbush has 2,500± taps. The mountain range views will complement your dream home! Offered with deferral of permits.

MLS# 4706530 | \$165,000

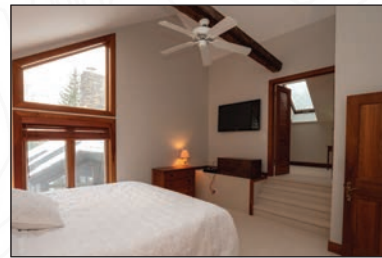
Condominiums



Weeks Hill Meadows #2

Fully furnished and equipped condo features 3 bedrooms, 4 baths, beautiful stone fireplace, and an expansive deck. Enjoy close proximity to Stowe Village and the Mountain Resort!

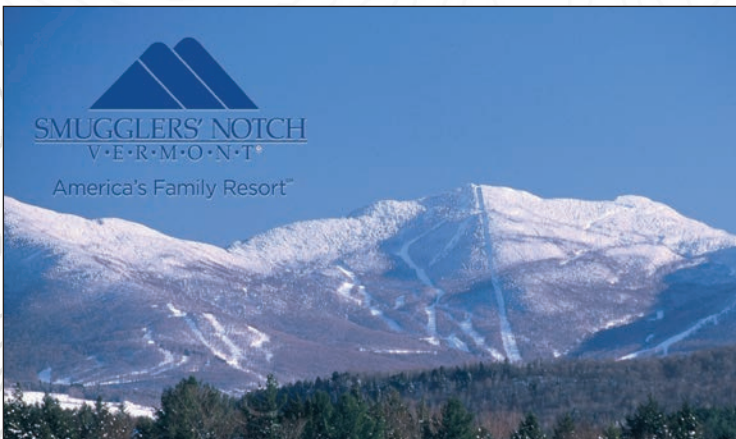
MLS# 4724568 | \$475,000



Stoweflake Units 620 & 621

Well maintained 3 bedroom, 3 bath condo. Enjoy access to Stoweflake Spa, pool, tennis and more - plus the Stowe rec path is just steps away. Rain or shine, there is always something to do here!

MLS# 4695267 | \$390,000



Smugglers Notch Ski Condominiums

Ownership at Smugglers' is an investment in your family and in the luxury of time to spend together making memories and family traditions. With a range of purchase options available, plus rental and income opportunities, you simply can't go wrong.

Full ownership opportunities starting at \$69,000

Architecturally Significant Homes

Award-Winning "Raven Beach"

From the minute you drive up the winding driveway to this elegantly handcrafted home, you will experience the vision that makes this property unlike any other on the market today... An elegantly handcrafted home nestled thoughtfully into its lush 10.7± acre landscape, with mature gardens and mountain views... Every inch of this classic 2,300± sq. ft. contemporary, rebuilt in 2012, bears the creative stamp of its designer owners.

MLS# 4703567 | \$950,000



Magnificent Modern Industrial

One-of-a-kind Waterbury estate on 29± acres overlooks the Waterbury Reservoir and boasts a panoramic view of the Worcester Mountain Range. Contemporary lines of steel beams blend with the warmth of wood creating a truly unique home. Enjoy a heated salt water pool, pond, private woods and trails that connect into thousands of acres of State Forest.

MLS# 4641668 | \$1,299,000



Secluded Morristown Estate

Drive by rolling pastures and ponds as you wind your way up the driveway to this private setting where you will find a beautiful, well maintained, spacious 2 bedroom, 2 bath 2,296 finished square foot home. This distinguished estate is set upon 68± acres of pastures and ponds, woods and trails. The kitchen stands out with red birch floors and cherry kitchen cabinets while the living room is anchored by floor to ceiling fireplace and natural woodwork.

MLS# 4727644 | \$999,000



Stowe Notchbrook Chalet

Truly a recreational paradise, this impressive Stowe home is located in the desirable Notchbrook neighborhood where it enjoys close proximity to Stowe Mountain Resort, Vermont Land Trust lands and the Adams Camp property. This home is offered furnished and is located in a desirable neighborhood near Stowe Mountain Resort. The 4-BR home has floor-to-ceiling windows, wood burning fireplace, and sauna. Owners may use Notchbrook's pool and tennis courts.

MLS# 4668393 | \$895,000

Estate Properties



Vermont Country Living

Enjoy peace and quiet from this comfortable 4 bed, 3 bath, 2,496 sq. ft. log cabin. Fully self-sufficient, the homestead is solar powered with a separate post and beam barn and sugar shack. 6,000 Maples are currently tapped, with potential for thousands more. Acres upon acres of trails, brooks, waterfalls and mountain views are yours to enjoy!

27 ± Acre Offering
MLS# 4679899 | \$699,000

522 ± Acre Offering
MLS# 4675400 | \$1,999,000



'Turkey Heaven' Own A Slice of Stowe

As Mark Twain said, "Buy land, they're not making it anymore." ... and here it is, that unique parcel of land that can not be duplicated. Build your dream home above the pond and you will have potential for views from Sugarbush to Jay Peak. Located below the iconic Pinnacle peak this 182 +/- parcel is enrolled in the current use tax program, and has an active Sugarbush. Wildlife abounds, and turkey are abundant, and the property backs up to 13,600 conserved acres in Putnam State Forest.

182 ± Acre Offering
MLS# 4711927 | \$1,100,000





Multi-level 5 bedroom, 5 bath residence on 6.6+ acres with gorgeous views towards Camel's Hump. The interior features a greenhouse, elevator, indoor basketball half court, 2 laundry rooms, and an in-law suite with separate screened porch.

MLS# 4696023 | \$899,000



Teresa Merelman

Office (802) 760-3141

Cell (802) 793-5171

teresa@pallsperra.com

stoweusa.com



"The Fountain" Currently zoned as 2 condos. Condo A (main house) has 4000± sq. ft., 5 bedrooms, and a 1 bedroom apartment. Condo B (carriage house) has 2,454± sq. ft. and 3 bedrooms. Wood floors, fireplaces/gas stoves throughout both units. Mt. Mansfield views.

MLS# 4705704 | \$895,000

427 HOUSTON FARM ROAD, STOWE



This 4,268± sq. ft. contemporary home is located in a wonderful, private Stowe neighborhood less than 5 miles from Stowe Mountain Resort. Includes 5 bedrooms, an updated chef's kitchen, great room, and fireside reading area. Set on nearly 2 AC with lush perennial gardens and swimming pool.

MLS # 4693813 | \$698,000



Roy Clark
(802) 760-3147
roy.clark@pallsperra.com





BECKWITH

REAL ESTATE

— & —

LUXURY RENTALS

802.253.2221

beckwithrentals.com

Vacation Rentals • Seasonal Rentals
Property Management • Real Estate

Are you ready?

An Energy Kinetics System 2000 – considered the most efficient heating and hot water system available – **can save up to 40% off your fuel consumption.** Provides virtually endless hot showers, too! Low interest financing available through Efficiency VT for qualified applicants.

Call today to learn more!



**SYSTEM
2000**



FRED'S
— ENERGY —

YOU'VE GOT A FRIEND



LOCALLY OWNED AND
OPERATED SINCE 1973

DERBY
802.766.4949

LYNDONVILLE
802.626.4588

MORRISVILLE
802.888.3827

HEATING OIL
PROPANE
PLUMBING
HEATING & AIR
CONDITIONING
SERVICE &
INSTALLATION
GENERATORS
SEWER PUMPS
CENTRAL VAC
WATER HEATERS
& SOFTENERS
CUSTOM DESIGN
KITCHEN & BATH
REMODELS
24/7 EMERGENCY
SERVICE



CallFreds.com

dkn

Darby Kolter & Nordle, LLP

ATTORNEYS AT LAW



Quality Legal Work. Premier Service.

*Commercial & Residential Real Estate
Condominiums • Permitting • Small Business
Estate Planning & Administration
Personal Injury & Workers Compensation
Arbitration & Mediation*

Richard W. Darby • Mark H. Kolter • Christopher J. Nordle

Waterbury Office

89 South Main Street
Waterbury, VT 05676
(802) 244-7352
fax 244-5954

Stowe Office

996 South Main Street, Unit 1A
Stowe, VT 05672
(802) 253-7165
fax 253-7468

www.waterburystowelaw.com

Four
Seasons



Sotheby's

INTERNATIONAL REALTY

LIVESTOWE



EXQUISITE INDULGENCE

Casual luxury beyond the imagination. Strategic location. Oasis of privacy. This home epitomizes the rustic modern country experience.

STOWE | \$10,950,000 | MLS#4721679



TIMELESS MOUNTAIN CONTEMPORARY

Boasting ample space for entertaining, this home with breathtaking mountain views on 7.29 acres has a media room, exercise room, first floor master and more.

STOWE | \$1,975,000 | MLS#4724718



AUTHENTIC POST & BEAM FARMHOUSE

Features include a classic country living room with brick fireplace, large dining room for entertaining and a country kitchen with cherry cabinetry.

ELMORE | \$1,250,000 | MLS#4718941



FARMHOUSE WITH LAKEFRONT

On a lake, in a meadow, alongside the woods. Superior new construction and building systems. Wood-burning fireplace, all-day sun, level 67 acres, sandy lakefront, loons.

GREENSBORO | \$1,125,000 | MLS#4697423



EXQUISITE HOME

This magnificent home, sited in absolute serenity at the end of a private 1/8 mile driveway, and is the result of combining two authentic farmhouses.

CRAFTSBURY | \$985,000 | MLS#4657819



CHARMING CRAFTSMAN STYLE HOME

A tree lined driveway off leads to this charming Craftsman style home and barn on 10 acres enhanced by pristine meadows, mature shade trees and mountain vistas.

STOWE | \$769,000 | MLS#4705472



BUCOLIC STORYBOOK SETTING

Single level living with casual elegance comprehensively updated in 2017 featuring superior materials and detailing throughout, plus luxurious first floor owner's suite.

CRAFTSBURY | \$674,000 | MLS#4727348



EXQUISITE MOUNTAIN SKI HOUSE

Cathedral ceiling, stone hearth, and Vermont country-style kitchen complimented by hand-dipped cedar shakes, southern pine floors, and Nantucket coastal colors.

CAMBRIDGE | \$669,690 | MLS#4717237



BEAUTIFUL HOME IN GREAT LOCATION

Four bedroom home with main level master, great room, Stone patio, large garage and accessory apartment along the boundary of the Little River.

STOWE | \$649,000 | MLS#4723267



CUSTOM BUILT CONTEMPORARY HOME

A perfect home in a private setting minutes from Smugglers' Notch Resort. This custom-designed house could be your year-round home or weekend ski-country getaway.

CAMBRIDGE | \$639,500 | MLS#4720567



ASTOUNDING SUN-FILL HILLSIDE

Private end of road location, strategically located just south of the village. Existing driveway and lawn await your dream mountain home.

STOWE | \$550,000 | MLS#4723342



COUNTRY LIVING

Off The Beaten Path yet beautifully sited in broad green fields at the foot of Stannard Mountain. This home is ideal for any couple or family.

GREENSBORO | \$172,500 | MLS#4712305

**Your home is a valuable asset, your
real estate agent should be too.**



Geoffrey Wolcott
802.233.9465



Lea Van Winkle
802.363.3890



Peter Tucker
802.598.5813



Brent Libby
802.498.4102



Betsy Donlon
802.533.9909

For a full selection of our listings, please call us at **802.253.7267**

580 MOUNTAIN RD | STOWE | FourSeasonsSIR.com

Each Office is Independently Owned and Operated.



EXTRAORDINARY CLASSIC EQUESTRIAN ESTATE

Gracefully sited, this exceptional Greek revival style Farmhouse in an exquisite private setting on 18+ pristine acres has sweeping panoramic views of the Green Mountains. Modern open floor plan, gourmet kitchen, generous master, fireplace, woodstove, spacious mudroom and game room. Walls of windows lead to an expansive stone patio with an outdoor fireplace. Five-stall horse barn, heated tack room with office, outdoor ring and 10+ acres of fenced pasture. Beautifully landscaped grounds with fruit trees, raspberry bushes and perennial gardens. Minutes to Stowe, Sugarbush and Waterbury Reservoir and a short commute via interstate to Burlington, Airport, Universities, and nearby Boston.

WATERBURY, VT | \$1,190,000 | MLS# 4699478



Karen Bresnahan | 802.310.0447 | 802.846.7845
Karen.Bresnahan@FourSeasonsSIR.com | FourSeasonsSIR.com

Each Office is Independently Owned and Operated.



Johnson: custom easy living home on 4.19 acres includes Lamoille River frontage. Entertain your family and friends with the open floor plan! Master bedroom suite with multi jetted walk in shower, tub, double sink vanity. 2 additional bedrooms, 2.5 baths PLUS heated workshop, garage, and utility rooms. Wrap around covered porch and more!
MLS 4698739. \$299,000



Elmore: 221.95 surveyed acres just south of Elmore Mountain Approved home-site, established trails, future Maple sugarbush and growing timber.

MLS 4700740 \$995,000



Lamoille County and Northern Vermont: Approved building lots and acreage.



MARBLE REALTY, INC.

Roy and Marcia Marble
 14 Stafford Avenue, Morrisville, VT 05661
 802-888-3418 * marblerealty@comcast.net
 www.marblerealty.com



Stowe Townhouse

Homeownership in Stowe, with all the amenities at your doorstep. Spa, gym, restaurants, centrally located on the Mountain Road. Easy access for shuttle. Townhome with three en suite bedrooms. Full basement & one bedroom can be a lockoff for guests or private rental.



REALTY

Panoramic Stowe Views

Situated on just under 17 acres, 180 degree views, close to Stowe Mountain Resort. Previously permitted for up to 8 bedrooms, direct access to trails for hiking/biking, cross country skiing.

802.999.7398

www.K2RealtyVT.com

info@K2RealtyVT.com

Red Barn Realty of Vermont



Sales & Rentals

Toby Merk
Owner/Broker - 508.364.1277



\$1,600,000

Waterbury Land

Large land holding along highly traveled Stowe Waterbury Road/ Route 100 corridor. 73 acres with 53 acres on the west and 18+/- acres on the east side of Route 100.



Exclusive Rentals

Visit StoweVTRentals.com for a wide variety of vacation rentals to suit every taste!

Sales Associates

Susi Benoit - 802.598.6342 | KC Chambers - 802.224.6343
Lynn Davis - 802.793.0054 | Rebecca Donaldson - 802.798.3006
Mark Henzel - 802.371.9192 | Nancy Rooney - 802.760.0586

Rentals Associates

Katy Lanpher - 802.253.4994 | Heather Snyder - 802.253.4994



\$1,699,000

South Hollow

Exceptional 30+ acre property. Luxurious country living in a custom designed and built farmhouse-style home with four bedroom and four full and two half baths.



\$475,000

Elmore Mountain Road

Updated, well-maintained four bedroom, three bath home on 1.5 acres. Gourmet kitchen, hardwood floors, open floor plan.



\$1,150,000

Bending Birch Farm

Unique farmhouse built in 1800 w/subsequent additions for gracious country living. 14.70 acres. Abutts conserved land. Barn, pastures, trails, private end of road location.

TIM MEEHAN BUILDERS

**BUILDING
EXCELLENCE**

**EXCEPTIONAL HOMES
CREATIVE REMODELING**



802.777.0283

588 S. Main St. | Stowe, Vermont
timmeehanbuilders.com



LOAN DECISIONS MADE LOCALLY.

UnionBank
LOAN CENTER



ROBYN MASI
802.888.0410
Morrisville, Main Street
NMLS# 627439



SHERRIE BULL
802.888.0958
Morrisville, Northgate Plaza
NMLS# 58318



ANITA LOTTO
802.253.3880
Stowe, Park Street
NMLS# 91841

MORTGAGE FINANCING FOR YOUR NEEDS. STAY LOCAL. GO FAR.

FIRST-TIME HOMEBUYER PROGRAMS | BUILD | RD | FHA | VA | VHFA

Member FDIC

1.800.753.4343 | UBLOCAL.COM

Equal Housing Lender

Sterling Home Inspection, LLC

Bob Malbon

office - 802-888-2877 mobile/text - 802-730-7504

bobmalbon@sterlinginspectionvt.com

on the web at: sterlinginspectionvt.com

Visit web site for pricing - Available Weekends
Vermont Licenced Property Inspector

A law practice

dedicated to the area

of real estate,

serving the entire

state of Vermont.

Our Only Focus

THE
LAW OFFICES
OF FRED V. PEET

55 PATCHEN ROAD
SOUTH BURLINGTON, VT 05403
802.860.4767

WWW.PEETLAW.COM



Many thanks to our Affiliate Members

Academy Mortgage Corporation
Mark Stanton
Jeff Teplitz

Gale & McAllister, PLLC
Anna Black
Lisa Gale

Belrose Home Inspection Svs
Jeff Belrose

H. A. Manosh Corp
Nick Manosh

Breton & Simon, LLC
Brice Simon

Harry Hunt Architects, LLC
Harry Hunt

Community National Bank
Donna Kennison

Hickock & Boardman Insurance
Richard Smith

Darby Stearns Thorndike Kolter
Alan Thorndike

Horsley Lajoie Goldfine
Jesse Goldfine

Donald P. Blake, Jr. Inc.
Donald Blake

Jewett's Appraisal Services
Parma Jewett

Edward Jones Stowe Branch
Caren Merson

Kittredge Mortgage Corporation
Keith Kittredge

Fairway Independent Mortgage Co
Mike Conn
Barb McHenry

Law Offices of Fred V. Peet
Fred Peet

Fred's Energy
Ken LaPlume

Little River Survey Company
Tricia Kules

Morgan Stanley
Tom Sequist

Movement Mortgage LLC
Thomas Stewart
Jay Vallieres

Northern New England Homes
Tim Meehan

Northfield Savings Bank-Montpelier
Maryellen Laperle

Olson & Associates, PLC
Tara Jakobs
Rebecca Olson
Kyle Seabolt

Over and Above Photography
Gerald Smith

Patterson & Smith Construction
Shapleigh Smith

Sargent Law Office
Tim Sargent

Stackpole & French
Ed French
Jeremy Hoff

Sterling Home Inspection
Bob Malbon

Stevens Law Office
Leslie Anderson
Hal Stevens

The Finishing Company
Daniel Prior

The Stowe Reporter
Greg Popa

Union Bank - Stowe
Anita Lotto
Chondra Pollard

Union Bank - Morrisville
Sherrie Bull
Robyn Masi

Vermont Federal Credit Union
Mark Antell
Tina Plante

Yankee Home Solutions
A.J. Shinnars
Jim Smith

An Architectural Masterpiece Awaits You



60 glorious acres surround this magnificent, gracious home, which overlooks a swimming pond. Designed by a renowned architect with over 4,000 sq. ft. of living area, you'll marvel at the many distinctive, intricate details that this home has to offer. Multiple fireplaces are just for ambiance with a new state-of-the-art dual fuel heating system for real comfort. A 2 car garage with an apartment above could serve as a guest area or housekeeper's residence. Located only 30 minutes from the best downhill skiing at Jay Peak.

Listed at an unbelievable \$385,000



Barbour Real Estate Inc.
"Your Hometown Agency"

46 Hutchin's Place, Morrisville, VT 05661 • 802-371-7639
jane@barbourrealestateinc.com • www.barbourrealestateinc.com

www.zephyrmeadowsrealestate.com



Zephyr Meadows
Real Estate LLC

DEDICATION - INTEGRITY - RESPECT

Tel: 802-744-6832
or Text: 802-673-3067

Laurie Godin-Dannat,
Broker/ Realtor
Lowell, Vermont





Pam Plummer
OFFERING STYLE, SIMPLICITY & RESULTS



"Pam has a special talent for seeing the strengths in a house, in a room, in a piece of furniture and capitalizing on them, turning them from ordinary (or worse!) into something really special that 'pops' and feels simple and authentic.

Her skills are solid, unique and also incredibly practical, but just as valuable is the energy and passion she brings to a home."

—PETER, WATERBURY CENTER



pam@pamplummer.com | 802.793.1189
Interior Design | Real Estate Staging

Belrose Home Inspection



Residential Home Inspection

Commercial Inspection

Manufactured Homes

Mold Assessment

Mold Cleaning and Remediation

Thermal Imaging

Vermont's First Certified Master Inspector



Call Jeff Belrose
802-309-2648

belrosej5@yahoo.com

www.belroshomeinspectionservices.com



**kaiser
homes**
vermont



www.kaiserhomesvt.com
8 0 2 3 5 5 0 9 9 2

Lindal
CEDAR HOMES



At the heart of the Lindal Experience lives progress and tradition, inspiration and predictability- the cutting-edge architecture of Turkel Design delivered through the time-honored building systems of Lindal Cedar Homes for over 70 years - for information visit lindal.com or contact kaiser homes, Lindal's independent VT dealer at info@kaiserhomesvt.com.



Gale & McAllister PLLC
ATTORNEYS AT LAW

Helping to Make Your Wishes A Reality

Whether purchasing your dream home, a vacation getaway or looking to protect your assets, Gale & McAllister is here for you.

Outstanding legal counsel in the areas of real estate, business, estate planning and probate.

☎ Lisa N. Gale, Esq.
lisa@gmlawvt.com

☎ Scott A. McAllister, Esq.
scott@gmlawvt.com

☎ Anna A. Black, Esq.
anna@gmlawvt.com

☎ Laura Bradrick-Treu, Esq.
laura@gmlawvt.com

www.gmlawvt.com

Offices located at
254 Mountain Road, Stowe, Vermont
78 Severance Green, Suite 102, Colchester, Vermont
75 Talcott Road, Suite 30, Williston, Vermont (by appointment)



Phone (802) 876-7478 Fax (802) 871-5742

Trust Us With Your Home



Amazing Views of Camel's Hump Mt!
Custom home with master suite plus 3 BR,
home office, screened in porch, central living
room with huge views, kitchen booth, slate
patio & oversized garage. \$849,000



Renovated in 2003: original barn features
large master suite, open kitchen, living &
dining area, main floor bonus room, 3 car
garage & huge lawn space! Convenient living,
Convenient location! \$389,000



Mountain Road in Stowe, Historic Building,
fully restored & meticulously maintained.
Commercial spaces on main floor with
gorgeous apartment above. Custom slate
patios. \$650,000



Lot #71: \$ 310,000 Stunning views to the South
in Robinson Springs.
Also available: 5.34 on Rt 108 in Stowe. Mid
Mountain Road Location. Call for details on
this and other land available in the area.



Gorgeous kitchen loads of room for family &
guests in this home in the mountains. South-
ern view, open floor plan, walkout lower level
with family room & full bath. \$1,150,000



Spacious living at Stonybrook! 5 Bedrooms,
FUN lower level with game room spaces. Two
car garage, private setting at the end of the
road with large deck spaces. \$515,000

802.253.1553

254 Mountain Road | Stowe | info@LRRVermont.com

Gayle Oberg | Mike Hickey | Zoe Bedell | Rich Drill



Your Trusted Real Estate Advisors

LRRVermont.com





What Exactly Is a REALTOR®?

A REALTOR® is a licensed real estate salesperson who belongs to the National Association of REALTORS®, the largest trade group in the country. REALTORS® are held to a higher ethical standard than licensed agents and must adhere to a Code of Ethics. Every agent is not a REALTOR®, but most are. If you're unsure, you can ask your agent if they're a licensed REALTOR®. Look for this trademark:



Lamoille Area REALTOR® Offices

Barbour Real Estate 802-888-5444	Coldwell Banker Carlson R.E. 802-253-7358	Pall Spera Company Realtors <i>Mountain Road, Stowe</i>	Stowe Area Realty LLC 802-760-3100
Beckwith Real Estate 802-253-2221	Four Seasons 802-253-7267	Sotheby's International <i>Main Street, Stowe</i>	Sugarbush Realty & Stowe Vermont Realtors 802-583-3000
Beeman Real Estate 802-888-7510	K2 Realty Associates 802-999-7398	Northgate Plaza, Morrisville 802-888-1102	Susan Martin & Co. Realtors 802-888-0088
Bordner Real Estate 800-621-2530	Little River Realty 802-253-1553	Red Barn Realty of Vermont 802-253-4994	Thomas Hirschak Company 802-888-4662
Brent Miller Real Estate 802-888-3390	Marble Realty, Inc. 802-888-3418	Spruce Peak Realty 802-253-0320	Trapp Family Lodge 802-253-5738
Century 21 Jack Associates <i>Morrisville</i> 802-888-0021	Mountain Associates Realtors 802-253-8518	Sterling Realty, Ltd. 802-253-2111	William Raveis Stowe Realty 802-253-8484
<i>Waterbury</i> 802-244-4500	New England Landmark Realty 866-324-2427		Zephyr Meadows 802-744-6832

Home Ownership is the American Dream

The National Association of REALTORS® launched the *Home Ownership Matters* campaign to help protect, celebrate and embrace the American Dream. Together, REALTORS® and NAR's leadership continue to work every day to inform, educate and engage the people of the United States. From Main Street to Capitol Hill, we're delivering a powerful message:

Only NAR and its members fight for property rights in America.
Why? Because *Home Ownership Matters*--and it always will.

Visit www.homeownershipmatters.realtor to find out more about why *Home Ownership Matters* to people, communities and to America.